



Test Report issued under the responsibility of:

KTR KOREA TESTING &
RESEARCH INSTITUTE

**TEST REPORT
IEC 62133-2**

Secondary cells and batteries containing alkaline or other non-acid electrolytes – Safety requirements for portable sealed secondary cells, and for batteries made from them, for use in portable applications – Part 2: Lithium systems

Report Number.: KTR-2023-00071

Date of issue: 2024-01-16

Total number of pages.....: 28 pages

Name of Testing Laboratory

preparing the Report.....: KTR SHENZHEN Co., Ltd.

Applicant's name.....: ZHONGSHAN ZHONGWANGDE NEW ENERGY TECHNOLOGY CO., LTD

Address: 1-2F, No.3, Factory Building, Dongya Area, Dache Industrial Park, Nanlang Town, Zhongshan City, Guangdong Province, China

Test specification:

Standard: IEC 62133-2:2017, IEC 62133-2:2017/AMD1:2021

Test procedure: CB Scheme

Non-standard test method: N/A

TRF template used: IECEE OD-2020-F1:2021, Ed.1.4

Test Report Form No.: IEC62133_2C

Test Report Form(s) Originator: DEKRA Certification B.V.

Master TRF: Dated 2022-07-01

Copyright © 2022 IEC System of Conformity Assessment Schemes for Electrotechnical Equipment and Components (IECEE System). All rights reserved.

This publication may be reproduced in whole or in part for non-commercial purposes as long as the IECEE is acknowledged as copyright owner and source of the material. IECEE takes no responsibility for and will not assume liability for damages resulting from the reader's interpretation of the reproduced material due to its placement and context.

If this Test Report Form is used by non-IECEE members, the IECEE/IEC logo and the reference to the CB Scheme procedure shall be removed.

This report is not valid as a CB Test Report unless signed by an approved IECEE Testing Laboratory and appended to a CB Test Certificate issued by an NCB in accordance with IECEE 02.

General disclaimer:

The test results presented in this report relate only to the object tested.

This report shall not be reproduced, except in full, without the written approval of the Issuing NCB. The authenticity of this Test Report and its contents can be verified by contacting the NCB, responsible for this Test Report.

Test item description	Rechargeable Li-ion Battery	
Trade Mark(s)	N/A	
Manufacturer	Same as applicant	
Model/Type reference	ZWD603026S / 1ICP6/30/26	
Ratings	3.87Vd.c., 650mAh 2.515Wh	
Responsible Testing Laboratory (as applicable), testing procedure and testing location(s):		
<input checked="" type="checkbox"/> CB Testing Laboratory:	KTR SHENZHEN Co., Ltd.	
Testing location/ address	C202, Building C, Sino German Europe Industrial Park, Hangcheng Avenue, Guxing Community, Xixiang Street, Bao'an District, Shenzhen City, China	
Tested by (name, function, signature)	Jason Jiang (Project Handler)	<i>Jason Jiang</i>
Approved by (name, function, signature) ..	Jonny Yang (Reviewer)	<i>Jonny Yang</i>
Testing procedure: CTF Stage 1:		
Testing location/ address		
Tested by (name, function, signature)		
Approved by (name, function, signature) ..		
Testing procedure: CTF Stage 2:		
Testing location/ address		
Tested by (name + signature)		
Witnessed by (name, function, signature) ..		
Approved by (name, function, signature) ..		
Testing procedure: CTF Stage 3:		
Testing procedure: CTF Stage 4:		
Testing location/ address		
Tested by (name, function, signature)		
Witnessed by (name, function, signature) ..		
Approved by (name, function, signature) ..		
Supervised by (name, function, signature) :		

List of Attachments (including a total number of pages in each attachment):

Attachment 1: (Republic of Korea) National Difference (3 pages).

Attachment 2: Photo documentation (4 pages).

Summary of testing:**Tests performed (name of test and test clause):**

clause 7.2.1 Continuous charging at constant voltage (cells)

clause 7.2.2 Case stress at high ambient temperature (battery)

clause 7.3.1 External short-circuit (cells)

clause 7.3.2 External short-circuit (batteries)

clause 7.3.3 Free fall (cells and batteries)

clause 7.3.4 Thermal abuse (cells)

clause 7.3.5 Crush (cells)

clause 7.3.6 Over-charging of battery

clause 7.3.7 Forced discharge (cells)

clause 7.3.8 Mechanical tests (batteries)

- 7.3.8.1 Vibration

- 7.3.8.2 Mechanical shock

clause 7.3.9 Forced internal short-circuit (cells)

clause 8.2 Small cell and battery safety information

Tests are made with the number of batteries and cells specified in IEC 62133-2:2017/AMD1:2021 Table 1.

Testing location:**KTR SHENZHEN Co., Ltd.**

C202, Building C, Sino German Europe Industrial Park, Hangcheng Avenue, Guxing Community, Xixiang Street, Bao'an District, Shenzhen City, China

Summary of compliance with National Differences (List of countries addressed):

KR

KR= Republic of Korea

☒ The product fulfils the requirements of EN 62133-2:2017, EN 62133-2:2017/AMD1:2021

Use of uncertainty of measurement for decisions on conformity (decision rule) :

☒ No decision rule is specified by the IEC standard, when comparing the measurement result with the applicable limit according to the specification in that standard. The decisions on conformity are made without applying the measurement uncertainty ("simple acceptance" decision rule, previously known as "accuracy method").

☐ Other:... (to be specified, for example when required by the standard or client, or if national accreditation requirements apply)

Information on uncertainty of measurement:

The uncertainties of measurement are calculated by the laboratory based on application of criteria given by OD-5014 for test equipment and application of test methods, decision sheets and operational procedures of IECEE.

IEC Guide 115 provides guidance on the application of measurement uncertainty principles and applying the decision rule when reporting test results within IECEE scheme, noting that the reporting of the measurement uncertainty for measurements is not necessary unless required by the test standard or customer.

Calculations leading to the reported values are on file with the NCB and testing laboratory that conducted the testing.

Copy of marking plate:

The artwork below may be only a draft. The use of certification marks on a product must be authorized by the respective NCBs that own these marks.

<p>WARNING</p> <p>Do not swallow, dismantle, pierce, ram, squeeze or throw into fire; do not use the battery after soaking in water; do not continue to use if severe swelling occurs. Keep it out of the reach of children.</p> <p>- Keep small cells and batteries which are considered swallowable out of the reach of children</p> <p>- Swallowing may lead to burns, perforation of soft tissue, and death. Severe burns can occur within 2 h of ingestion</p> <p>- In case of ingestion of a cell or battery, seek medical assistance promptly</p>		<p>Red (+) Blue(T) Black (-)</p> <p>Rechargeable Li-ion Battery</p> <p>Model: ZWD603026S</p> <p>Trade mark: ZWDB</p> <p>Nominal Voltage: 3.87V</p> <p>Limit Charge Voltage : 4.45V</p> <p>Rated Capacity: 650mAh 2.515Wh</p> <p>Date:2024-01-09</p> <p>1ICP6/30/26</p> <p>Manufacturer: ZHONGSHAN ZHONGWANGDE NEW ENERGY TECHNOLOGY CO.,LTD</p>
-----------------------------------------------------------------------------------------------------------------------------------------------------------------------------------------------------------------------------------------------------------------------------------------------------------------------------------------------------------------------------------------------------------------------------------------------------------------------------------------------------------------------------------------------------------------	--	-----------------------------------------------------------------------------------------------------------------------------------------------------------------------------------------------------------------------------------------------------------------------------------------------------------------------------------------------------------------------------------------------------------------------

Remark:

"2024-01-09" represents the date of manufacture.
"2024" represents production year;
"01" represents production month;
"09" represents production day.

Test item particulars :	
Classification of installation and use	To be defined in final product
Supply Connection	DC lead wire
Recommend charging method declared by the manufacturer	Charging the battery with 130mA constant current until 4.45V, then constant voltage until the charge current reduces to 13mA.
Discharge current (0,2 It A)	130mA
Specified final voltage	3.0V
Upper limit charging voltage per cell	4.45V
Maximum charging current	0°C~20°C: 195mA; 20°C~45°C: 455mA
Charging temperature upper limit	45°C
Charging temperature lower limit	0°C
Polymer cell electrolyte type	<input type="checkbox"/> gel polymer <input type="checkbox"/> solid polymer <input checked="" type="checkbox"/> N/A
Possible test case verdicts:	
- test case does not apply to the test object: N/A	
- test object does meet the requirement: P (Pass)	
- test object does not meet the requirement: F (Fail)	
Testing	
Date of receipt of test item	2023-11-16
Date (s) of performance of tests	2023-11-16 to 2024-01-05
General remarks:	
"(See Enclosure #)" refers to additional information appended to the report. "(See appended table)" refers to a table appended to the report.	
Throughout this report a <input type="checkbox"/> comma / <input checked="" type="checkbox"/> point is used as the decimal separator.	
Manufacturer's Declaration per sub-clause 4.2.5 of IEC62133-2:	
The application for obtaining a CB Test Certificate includes more than one factory location and a declaration from the Manufacturer stating that the sample(s) submitted for evaluation is (are) representative of the products from each factory has been provided.....	<input type="checkbox"/> Yes <input checked="" type="checkbox"/> Not applicable
When differences exist; they shall be identified in the General product information section.	
Name and address of factory (ies) : Same as applicant	

General product information and other remarks:

The battery is constructed with single li-ion cell (1S1P), and has overcharge, over-discharge, over current and short-circuits proof circuit.

The main features of the battery are shown as below (clause 7.1.1):

Model (battery)	Nominal capacity	Nominal voltage	Nominal Charge Current	Nominal Discharge Current	Maximum Charge Current	Maximum Discharge Current	Maximum Charge Voltage	Final Voltage
ZWD603026 S	650mAh	3.87V	130mA	130mA	455mA ¹⁾	650mA ²⁾	4.45V	3.0V

The main features of the cell are shown as below (clause 7.1.1):

Model (cell)	Nominal capacity	Nominal voltage	Nominal Charge Current	Nominal Discharge Current	Maximum Charge Current	Maximum Discharge Current	Maximum Charge Voltage	Final Voltage
ZWD603026 S	650mAh	3.87V	130mA	130mA	455mA ³⁾	650mA ⁴⁾	4.45V	3.0V

The main features of the cell are shown as below (clause 7.1.2):

Model (cell)	Upper limit charge voltage	Taper-off current	Lower charge temperature	Upper charge temperature
ZWD60302 6S	4.45V	32.5mA	0°C	45°C

1)Remark:

The maximum charge current of battery declared by manufacturer:
0°C~20°C: Max. 195mA; 20°C~45°C: Max. 455mA.

2)Remark:

The maximum discharge current of battery declared by manufacturer:
-10°C~0°C: Max. 130mA; 0°C~15°C: Max. 325mA; 15°C~60°C: Max. 650mA.

3)Remark:

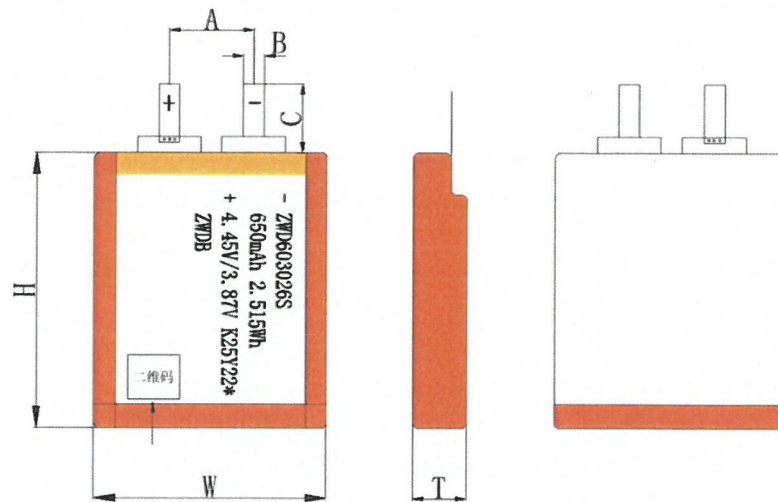
The maximum charge current of cell declared by manufacturer:
0°C~20°C: Max. 195mA; 20°C~45°C: Max. 455mA.

4)Remark:

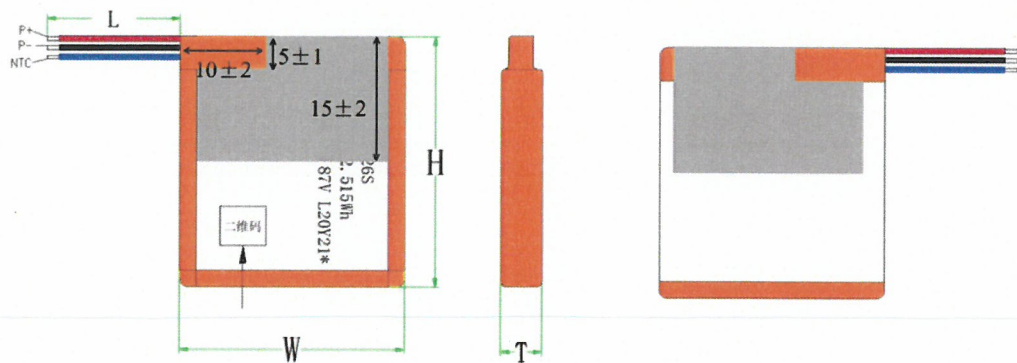
The maximum discharge current of cell declared by manufacturer:
-10°C~0°C: Max. 130mA; 0°C~15°C: Max. 325mA; 15°C~60°C: Max. 650mA.

Charging method for clause 7.1.2:

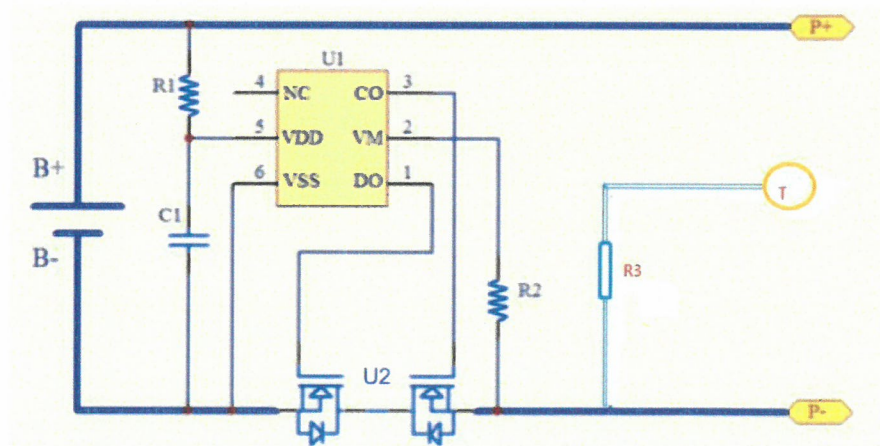
0°C: Max 195mA charging to 4.45V, then constant voltage until charging current reduces to 32.5mA;
20°C: Max 455mA charging to 4.45V, then constant voltage until charging current reduces to 32.5mA;
45°C: Max 455mA charging to 4.45V, then constant voltage until charging current reduces to 32.5mA.

Construction:

T: $\leq 6.0\text{mm}$, W: $\leq 30.0\text{mm}$, H: $\leq 26.0\text{mm}$
Cell



T: $\leq 6.2\text{mm}$, W: $\leq 30.0\text{mm}$, H: $\leq 28.1\text{mm}$
Battery

Circuit diagram:

IEC 62133-2			
Clause	Requirement + Test	Result - Remark	Verdict
4	PARAMETER MEASUREMENT TOLERANCES		P
	Parameter measurement tolerances		P
5	GENERAL SAFETY CONSIDERATIONS		P
5.1	General		P
	Cells and batteries so designed and constructed that they are safe under conditions of both intended use and reasonably foreseeable misuse		P
5.2	Insulation and wiring		P
	The insulation resistance between the positive terminal and externally exposed metal surfaces of the battery (excluding electrical contact surfaces) is not less than 5 MΩ	No metal surface exists.	N/A
	Insulation resistance (MΩ)..... :	N/A	—
	Internal wiring and insulation are sufficient to withstand maximum anticipated current, voltage and temperature requirements		P
	Orientation of wiring maintains adequate clearances and creepage distances between conductors		P
	Mechanical integrity of internal connections accommodates reasonably foreseeable misuse		P
5.3	Venting		P
	Battery cases and cells incorporate a pressure relief mechanism or are constructed so that they relieve excessive internal pressure at a value and rate that will preclude rupture, explosion and self-ignition		P
	Encapsulation used to support cells within an outer casing does not cause the battery to overheat during normal operation nor inhibit pressure relief		N/A
5.4	Temperature, voltage and current management		P
	Batteries are designed such that abnormal temperature rise conditions are prevented	Overcharge, over discharge, over current and short-circuit proof circuit used in this battery. See tests of clause 7.	P
	Batteries are designed to be within temperature, voltage and current limits specified by the cell manufacturer	See above.	P
	Batteries are provided with specifications and charging instructions for equipment manufacturers so that specified chargers are designed to maintain charging within the temperature, voltage and current limits specified	The charging limits specified in the manufacturer's specification	P
5.5	Terminal contacts		P

IEC 62133-2			
Clause	Requirement + Test	Result - Remark	Verdict
	The size and shape of the terminal contacts ensure that they can carry the maximum anticipated current		P
	External terminal contact surfaces are formed from conductive materials with good mechanical strength and corrosion resistance		P
	Terminal contacts are arranged to minimize the risk of short circuits		P
5.6	Assembly of cells into batteries		P
5.6.1	General		P
	Each battery has an independent control and protection for current, voltage, temperature and any other parameter required for safety and to maintain the cells within their operating region	1S1P, Protective circuit equipped on battery.	P
	This protection may be provided external to the battery such as within the charger or the end devices		N/A
	If protection is external to the battery, the manufacturer of the battery provide this safety relevant information to the external device manufacturer for implementation		N/A
	If there is more than one battery housed in a single battery case, each battery has protective circuitry that can maintain the cells within their operating regions		N/A
	Manufacturers of cells specify current, voltage and temperature limits so that the battery manufacturer/designer may ensure proper design and assembly	Current, voltage and temperature limits specified by cell manufacturer.	P
	Batteries that are designed for the selective discharge of a portion of their series connected cells incorporate circuitry to prevent operation of cells outside the limits specified by the cell manufacturer		N/A
	Protective circuit components are added as appropriate and consideration given to the end-device application		N/A
	The manufacturer of the battery provide a safety analysis of the battery safety circuitry with a test report including a fault analysis of the protection circuit under both charging and discharging conditions confirming the compliance		N/A
5.6.2	Design recommendation		P
	For the battery consisting of a single cell or a single cellblock, it is recommended that the charging voltage of the cell does not exceed the upper limit of the charging voltage specified in Table 2	Max. charge voltage: 4.45V, not exceed 4.45V specified in Clause 7.1.2, Table 2.	P

IEC 62133-2			
Clause	Requirement + Test	Result - Remark	Verdict
	For the battery consisting of series-connected plural single cells or series-connected plural cellblocks, it is recommended that the voltages of any one of the single cells or single cellblocks does not exceed the upper limit of the charging voltage, specified in Table 2, by monitoring the voltage of every single cell or the single cellblocks		N/A
	For the battery consisting of series-connected plural single cells or series-connected plural cellblocks, it is recommended that charging is stopped when the upper limit of the charging voltage is exceeded for any one of the single cells or single cellblocks by measuring the voltage of every single cell or the single cellblocks		N/A
	For batteries consisting of series-connected cells or cell blocks, nominal charge voltage are not counted as an overcharge protection		N/A
	For batteries consisting of series-connected cells or cell blocks, cells have closely matched capacities, be of the same design, be of the same chemistry and be from the same manufacturer		N/A
	It is recommended that the cells and cell blocks are not discharged beyond the cell manufacturer's specified final voltage	Final voltage of battery: 3.0V, not exceed the final voltage specified by cell manufacturer.	P
	For batteries consisting of series-connected cells or cell blocks, cell balancing circuitry are incorporated into the battery management system		N/A
5.6.3	Mechanical protection for cells and components of batteries		N/A
	Mechanical protection for cells, cell connections and control circuits within the battery are provided to prevent damage as a result of intended use and reasonably foreseeable misuse		N/A
	The mechanical protection can be provided by the battery case or it can be provided by the end product enclosure for those batteries intended for building into an end product		N/A
	The battery case and compartments housing cells are designed to accommodate cell dimensional tolerances during charging and discharging as recommended by the cell manufacturer		N/A
	For batteries intended for building into a portable end product, testing with the battery installed within the end product is considered when conducting mechanical tests		N/A
5.7	Quality plan		P

IEC 62133-2			
Clause	Requirement + Test	Result - Remark	Verdict
	The manufacturer prepares and implements a quality plan that defines procedures for the inspection of materials, components, cells and batteries and which covers the whole process of producing each type of cell or battery	Complied. ISO 9001: 2015 certificate provided.	P
5.8	Battery safety components	See TABLE: Critical components information	N/A

6	TYPE TEST AND SAMPLE SIZE		P
	Tests are made with the number of cells or batteries specified in Table 1 using cells or batteries that are not more than six months old		P
	The internal resistance of coin cells are measured in accordance with Annex D. Coin cells with internal resistance less than or equal to 3 Ω are tested in accordance with Table 1	Not coin cells	N/A
	Unless otherwise specified, tests are carried out in an ambient temperature of 20 °C \pm 5 °C		P
	The safety analysis of 5.6.1 identify those components of the protection circuit that are critical for short-circuit, overcharge and over discharge protection		P
	When conducting the short-circuit test, consideration is given to the simulation of any single fault condition that is likely to occur in the protecting circuit that would affect the short-circuit test	See clause 7.3.2.	P

7	SPECIFIC REQUIREMENTS AND TESTS		P
7.1	Charging procedure for test purposes		P
7.1.1	First procedure		P
	This charging procedure applies to subclauses other than those specified in 7.1.2		P
	Unless otherwise stated in this document, the charging procedure for test purposes is carried out in an ambient temperature of 20 °C \pm 5 °C, using the method declared by the manufacturer	See page 6.	P
	Prior to charging, the battery has been discharged at 20 °C \pm 5 °C at a constant current of 0,2 It A down to a specified final voltage	See page 6.	P
7.1.2	Second procedure		P
	This charging procedure applies only to 7.3.1, 7.3.4, 7.3.5, and 7.3.9		P

IEC 62133-2			
Clause	Requirement + Test	Result - Remark	Verdict
	After stabilization for 1 h to 4 h, at an ambient temperature of the highest test temperature and the lowest test temperature, respectively, as specified in Table 2, cells are charged by using the upper limit charging voltage and maximum charging current, until the charging current is reduced to 0,05 It A, using a constant current to constant voltage charging method	Charge temperature range specified by manufacturer: 0-45°C.	P
7.2	Intended use		P
7.2.1	Continuous charging at constant voltage (cells)	Tested complied.	P
	Fully charged cells are subjected for 7 days to a charge using the charging method for current and standard voltage specified by the cell manufacturer	Charging for 7 days with 130mA	P
	Results: no fire, no explosion, no leakage	(See appended table 7.2.1)	P
7.2.2	Case stress at high ambient temperature (battery)	Tested as client's request.	P
	Oven temperature (°C)	70	—
	Results: no physical distortion of the battery case resulting in exposure of internal protective components and cells	No physical distortion of the battery casing.	P
7.3	Reasonably foreseeable misuse		P
7.3.1	External short-circuit (cell)	Tested complied.	P
	The cells were tested until one of the following occurred:		P
	- 24 hours elapsed; or		N/A
	- The case temperature declined by 20 % of the maximum temperature rise		P
	Results: no fire, no explosion	(See appended table 7.3.1)	P
7.3.2	External short-circuit (battery)	Tested complied.	P
	The batteries were tested until one of the following occurred:		P
	- 24 hours elapsed; or		N/A
	- The case temperature declined by 20 % of the maximum temperature rise		P
	In case of rapid decline in short circuit current, the battery pack remained on test for an additional one hour after the current reached a low end steady state condition		P
	A single fault in the discharge protection circuit is conducted on one to four (depending upon the protection circuit) of the five samples before conducting the short-circuit test	Single fault conducted on four samples	P

IEC 62133-2			
Clause	Requirement + Test	Result - Remark	Verdict
	A single fault applies to protective component parts such as MOSFET (metal oxide semiconductor field-effect transistor), fuse, thermostat or positive temperature coefficient (PTC) thermistor	Single fault applies on MOSFET (U2)	P
	Results: no fire, no explosion	(See appended table 7.3.2)	P
7.3.3	Free fall	Tested complied.	P
	Results: no fire, no explosion	no fire, no explosion	P
7.3.4	Thermal abuse (cells)	Tested complied.	P
	Oven temperature (°C)	130	—
	Results: no fire, no explosion	no fire, no explosion	P
7.3.5	Crush (cells)	Tested complied.	P
	The crushing force was released upon:		P
	- The maximum force of 13 kN ± 0,78 kN has been applied; or		P
	- An abrupt voltage drop of one-third of the original voltage has been obtained		N/A
	Results: no fire, no explosion	(See appended table 7.3.5)	P
7.3.6	Over-charging of battery	Tested complied.	P
	The supply voltage which is:		P
	- 1,4 times the upper limit charging voltage presented in Table A.1 (but not to exceed 6,0 V) for single cell/cell block batteries or	6.0V applied.	P
	- 1,2 times the upper limit charging voltage resented in Table A.1 per cell for series connected multi-cell batteries, and		N/A
	- Sufficient to maintain a current of 2,0 It A throughout the duration of the test or until the supply voltage is reached		P
	Test was continued until the temperature of the outer casing:		P
	- Reached steady state conditions (less than 10 °C change in 30-minute period); or		N/A
	- Returned to ambient		P
	Results: no fire, no explosion	(See appended table 7.3.6)	P
7.3.7	Forced discharge (cells)	Tested complied.	P
	Discharge a single cell to the lower limit discharge voltage specified by the cell manufacturer		P
	The discharged cell is then subjected to a forced discharge at 1 It A to the negative value of the upper limit charging voltage		P

IEC 62133-2			
Clause	Requirement + Test	Result - Remark	Verdict
	- The discharge voltage reaches the negative value of upper limit charging voltage within the testing duration. The voltage is maintained at the negative value of the upper limit charging voltage by reducing the current for the remainder of the testing duration		P
	- The discharge voltage does not reach the negative value of upper limit charging voltage within the testing duration. The test is terminated at the end of the testing duration		N/A
	Results: no fire, no explosion	(See appended table 7.3.7)	P
7.3.8	Mechanical tests (batteries)	Tested complied.	P
7.3.8.1	Vibration	Tested complied.	P
	Results: no fire, no explosion, no rupture, no leakage or venting.....	(See appended table 7.3.8.1)	P
7.3.8.2	Mechanical shock	Tested complied.	P
	Results: no leakage, no venting, no rupture, no explosion and no fire.....	(See appended table 7.3.8.2)	P
7.3.9	Design evaluation – Forced internal short-circuit (cells)	Tested complied.	P
	The cells complied with national requirement for.....	France, Japan, Korea, Switzerland	—
	The pressing was stopped upon:		P
	- A voltage drop of 50 mV has been detected; or		P
	- The pressing force of 800 N (cylindrical cells) or 400 N (prismatic cells) has been reached	400N for prismatic cells	P
	Results: no fire	(See appended table 7.3.9)	P
8	INFORMATION FOR SAFETY		P
8.1	General		P
	Manufacturers of secondary cells provides information about current, voltage and temperature limits of their products	Information for safety mentioned in manufacturer's specifications.	P
	Manufacturers of batteries provides information regarding how to minimize and mitigate hazards to equipment manufacturers or end-users	Information for safety mentioned in manufacturer's specifications.	P
	Systems analyses are performed by device manufacturers to ensure that a particular battery design prevents hazards from occurring during use of a product		N/A
	As appropriate, any information relating to hazard avoidance resulting from a system analysis is provided to the end user		N/A

IEC 62133-2			
Clause	Requirement + Test	Result - Remark	Verdict
	Do not allow children to replace batteries without adult supervision		P
8.2	Small cell and battery safety information	Small cell and small battery.	P
	The following warning language is to be provided with the information packaged with the small cells and batteries or equipment using them:		P
	- Keep small cells and batteries which are considered swallowable out of the reach of children		P
	- Swallowing may lead to burns, perforation of soft tissue, and death. Severe burns can occur within 2 h of ingestion		P
	- In case of ingestion of a cell or battery, seek medical assistance promptly		P
9	MARKING		P
9.1	Cell marking	The final product is battery.	N/A
	Cells are marked as specified in IEC 61960, except coin cells		N/A
	Coin cells whose external surface area is too small to accommodate the markings on the cells show the designation and polarity		N/A
	By agreement between the cell manufacturer and the battery and/or end product manufacturer, component cells used in the manufacture of a battery need not be marked		N/A
9.2	Battery marking		P
	Batteries are marked as specified in IEC 61960, except for coin batteries	The battery is marked in accordance with IEC 61960, also see copy of marking plate.	P
	Coin batteries whose external surface area is too small to accommodate the markings on the batteries show the designation and polarity	Not coin batteries	N/A
	Batteries are marked with an appropriate caution statement		P
	- Terminals have clear polarity marking on the external surface of the battery, or		P
	- Not be marked with polarity markings if the design of the external connector prevents reverse polarity connections		N/A
9.3	Caution for ingestion of small cells and batteries	Small cell and small battery.	P
	Coin cells and batteries identified as small batteries include a caution statement regarding the hazards of ingestion in accordance with 8.2	Not coin cells	N/A

IEC 62133-2			
Clause	Requirement + Test	Result - Remark	Verdict
	Small cells and batteries are intended for direct sale in consumer-replaceable applications, caution for ingestion is given on the immediate package	Not intended for direct sale.	N/A
9.4	Other information		P
	The following information are marked on or supplied with the battery:		P
	- Storage and disposal instructions	Information for storage and disposal instructions mentioned in manufacturer's specifications.	P
	- Recommended charging instructions	Information for Recommended charging instructions mentioned in manufacturer's specifications.	P
10	PACKAGING AND TRANSPORT		P
	Packaging for coin cells are not be small enough to fit within the limits of the ingestion gauge of Figure 3		N/A
ANNEX A	CHARGING AND DISCHARGING RANGE OF SECONDARY LITHIUM ION CELLS FOR SAFE USE		P
A.1	General		P
A.2	Safety of lithium ion secondary battery	Complied.	P
A.3	Consideration on charging voltage	Complied.	P
A.3.1	General		P
A.3.2	Upper limit charging voltage	4.45V applied.	P
A.3.2.1	General		P
A.3.2.2	Explanation of safety viewpoint		N/A
A.3.2.3	Safety requirements, when different upper limit charging voltage is applied	4.45V applied.	N/A
A.4	Consideration of temperature and charging current		P
A.4.1	General		P
A.4.2	Recommended temperature range	See A.4.2.2.	P
A.4.2.1	General		P
A.4.2.2	Safety consideration when a different recommended temperature range is applied	Charging temperature declared by client is: 0-45°C	P
A.4.3	High temperature range	Charging high temperature declared by client is: 45°C	P
A.4.3.1	General		P

IEC 62133-2			
Clause	Requirement + Test	Result - Remark	Verdict
A.4.3.2	Explanation of safety viewpoint		P
A.4.3.3	Safety considerations when specifying charging conditions in the high temperature range		N/A
A.4.3.4	Safety considerations when specifying a new upper limit in the high temperature range		N/A
A.4.4	Low temperature range	Charging low temperature declared by client is: 0°C	P
A.4.4.1	General		P
A.4.4.2	Explanation of safety viewpoint		P
A.4.4.3	Safety considerations, when specifying charging conditions in the low temperature range		N/A
A.4.4.4	Safety considerations when specifying a new lower limit in the low temperature range		N/A
A.4.5	Scope of the application of charging current		P
A.4.6	Consideration of discharge		P
A.4.6.1	General		P
A.4.6.2	Final discharge voltage and explanation of safety viewpoint	Cell specified final voltage 3.0V. not exceed 3.0V specified by cell manufacturer.	P
A.4.6.3	Discharge current and temperature range		P
A.4.6.4	Scope of application of the discharging current		P
A.5	Sample preparation		P
A.5.1	General		P
A.5.2	Insertion procedure for nickel particle to generate internal short		P
A.5.3	Disassembly of charged cell		P
A.5.4	Shape of nickel particle		P
A.5.5	Insertion of nickel particle in cylindrical cell		N/A
A.5.5.1	Insertion of nickel particle in winding core		N/A
A.5.5.2	Marking the position of the nickel particle on both ends of the winding core of the separator		N/A
A.5.6	Insertion of nickel particle in prismatic cell		P
A.6	Experimental procedure of the forced internal short-circuit test		P
A.6.1	Material and tools for preparation of nickel particle		P
A.6.2	Example of a nickel particle preparation procedure		P
A.6.3	Positioning (or placement) of a nickel particle		P
A.6.4	Damaged separator precaution		P

IEC 62133-2			
Clause	Requirement + Test	Result - Remark	Verdict
A.6.5	Caution for rewinding separator and electrode		P
A.6.6	Insulation film for preventing short-circuit		P
A.6.7	Caution when disassembling a cell		P
A.6.8	Protective equipment for safety		P
A.6.9	Caution in the case of fire during disassembling		P
A.6.10	Caution for the disassembling process and pressing the electrode core		P
A.6.11	Recommended specifications for the pressing device		P
ANNEX B	RECOMMENDATIONS TO EQUIPMENT MANUFACTURERS AND BATTERY ASSEMBLERS		N/A
ANNEX C	RECOMMENDATIONS TO THE END-USERS		N/A
ANNEX D	MEASUREMENT OF THE INTERNAL AC RESISTANCE FOR COIN CELLS		N/A
D.1	General	Not coin cells	N/A
D.2	Method		N/A
	A sample size of three coin cells is required for this measurement		N/A
	Coin cells with an internal resistance greater than 3 Ω require no further testing		N/A
	Coin cells with an internal resistance less than or equal to 3 Ω are subjected to the testing according to Clause 6 and Table 1		N/A
ANNEX E	PACKAGING AND TRANSPORT		P
ANNEX F	COMPONENT STANDARDS REFERENCES		N/A

IEC 62133-2			
Clause	Requirement + Test	Result - Remark	Verdict

7.2.1	TABLE: Continuous charging at constant voltage (cells)				P
Sample No.	Recommended charging voltage Vc (Vdc)	Recommended charging current I _{rec} (A)	OCV before test (Vdc)	Results	
KTR-2023-00071-C001	4.45	0.13	4.429	A, B	
KTR-2023-00071-C002	4.45	0.13	4.424	A, B	
KTR-2023-00071-C003	4.45	0.13	4.426	A, B	
KTR-2023-00071-C004	4.45	0.13	4.428	A, B	
KTR-2023-00071-C005	4.45	0.13	4.428	A, B	
Supplementary information: A - No fire or explosion B - No leakage C - Others (please explain)					

7.3.1	TABLE: External short circuit (cell)					P
Sample No.	Ambient (°C)	OCV at start of test (Vdc)	Resistance of circuit (mΩ)	Maximum case temperature rise ΔT (K)	Results	
Samples charged at charging temperature upper limit (45°C)						
KTR-2023-00071-C006	55.3	4.44	82.5	57.8	A	
KTR-2023-00071-C007	55.3	4.43	84.6	53.9	A	
KTR-2023-00071-C008	55.3	4.43	88.7	52.9	A	
KTR-2023-00071-C009	55.3	4.43	86.4	56.0	A	
KTR-2023-00071-C010	55.3	4.43	87.5	70.1	A	
Samples charged at charging temperature middle limit (20°C)						
KTR-2023-00071-C011	55.4	4.41	83.6	58.1	A	
KTR-2023-00071-C012	55.4	4.41	85.2	57.2	A	
KTR-2023-00071-C013	55.4	4.41	86.4	51.9	A	

IEC 62133-2					
Clause	Requirement + Test			Result - Remark	Verdict
KTR-2023-00071-C014	55.4	4.41	85.7	55.1	A
KTR-2023-00071-C015	55.4	4.41	88.2	62.2	A
Samples charged at charging temperature lower limit (0°C)					
KTR-2023-00071-C016	55.3	4.33	84.6	61.6	A
KTR-2023-00071-C017	55.3	4.33	85.3	66.3	A
KTR-2023-00071-C018	55.3	4.34	86.6	62.8	A
KTR-2023-00071-C019	55.3	4.34	85.8	79.0	A
KTR-2023-00071-C020	55.3	4.34	87.2	67.3	A
Supplementary information: A - No fire or explosion B - Others (please explain)					

7.3.2	TABLE: External short circuit (battery)					P
Sample No.	Ambient T (°C)	OCV before test (Vdc)	Resistance of circuit (mΩ)	Maximum case temperature rise ΔT (K)	Component single fault condition	Results
KTR-2023-00071-B004	22.0	4.43	83.4	81.0	Short Circuit MOSFET (U2)	A
KTR-2023-00071-B005	22.0	4.43	86.6	75.4	Short Circuit MOSFET (U2)	A
KTR-2023-00071-B006	22.0	4.43	82.3	87.3	Short Circuit MOSFET (U2)	A
KTR-2023-00071-B007	22.0	4.43	85.8	86.8	Short Circuit MOSFET (U2)	A
KTR-2023-00071-B008	22.0	4.43	82.9	1.7	Normal	A
Supplementary information: A - No fire or explosion B - Others (please explain)						

IEC 62133-2			
Clause	Requirement + Test	Result - Remark	Verdict

7.3.5	TABLE: Crush (cells)				P
Sample No.	OCV before test (Vdc)	OCV at removal of crushing force (Vdc)	Maximum force applied to the cell during crush (kN)	Results	
Samples charged at charging temperature upper limit (45°C)					
KTR-2023-00071-C036	4.437	4.435	12.96	A	
KTR-2023-00071-C037	4.432	4.432	12.98	A	
KTR-2023-00071-C038	4.441	4.441	12.99	A	
KTR-2023-00071-C039	4.438	4.435	12.94	A	
KTR-2023-00071-C040	4.436	4.433	12.96	A	
Samples charged at charging temperature middle limit (20°C)					
KTR-2023-00071-C041	4.412	4.412	13.00	A	
KTR-2023-00071-C042	4.416	4.413	12.98	A	
KTR-2023-00071-C043	4.408	4.405	12.95	A	
KTR-2023-00071-C044	4.414	4.414	12.93	A	
KTR-2023-00071-C045	4.407	4.407	12.96	A	
Samples charged at charging temperature lower limit (0°C)					
KTR-2023-00071-C046	4.338	4.335	12.97	A	
KTR-2023-00071-C047	4.341	4.339	12.95	A	
KTR-2023-00071-C048	4.336	4.336	12.96	A	
KTR-2023-00071-C049	4.342	4.339	12.99	A	
KTR-2023-00071-C050	4.339	4.337	13.00	A	
Supplementary information: A - No fire or explosion B - Others (please explain)					

IEC 62133-2			
Clause	Requirement + Test	Result - Remark	Verdict

7.3.6	TABLE: Over-charging of battery			P
Constant charging current (A)..... :		1.3		—
Supply voltage (Vdc)..... :		6.0		—
Sample No.	OCV before charging (Vdc)	Total charging time (minute)	Maximum outer case temperature (°C)	Results
KTR-2023-00071-B012	3.208	57	38.1	A
KTR-2023-00071-B013	3.212	57	38.2	A
KTR-2023-00071-B014	3.206	57	40.4	A
KTR-2023-00071-B015	3.214	57	42.2	A
KTR-2023-00071-B016	3.216	57	38.2	A
Supplementary information: A - No fire or explosion B - Others (please explain)				

7.3.7	TABLE: Forced discharge (cells)			P
Sample No.	OCV before application of reverse charge (Vdc)	Measured reverse charge I_t (A)	Lower limit discharge voltage (Vdc)	Results
KTR-2023-00071-C039	3.197	0.65	3.0	A
KTR-2023-00071-C040	3.194	0.65	3.0	A
KTR-2023-00071-C041	3.184	0.65	3.0	A
KTR-2023-00071-C042	3.209	0.65	3.0	A
KTR-2023-00071-C043	3.200	0.65	3.0	A
Supplementary information: A - No fire or explosion B - Others (please explain)				

IEC 62133-2			
Clause	Requirement + Test	Result - Remark	Verdict

7.3.8.1	TABLE: Vibration					P
Sample No.	OCV before test (Vdc)	OCV after test (Vdc)	Mass before test (g)	Mass after test (g)	Results	
KTR-2023-00071-B017	4.425	4.421	9.544	9.544	A, B, C, D	
KTR-2023-00071-B018	4.424	4.419	9.557	9.555	A, B, C, D	
KTR-2023-00071-B019	4.427	4.423	9.494	9.493	A, B, C, D	
Supplementary information: A - No fire or explosion B - No rupture C - No leakage D - No venting E - Others (please explain)						

7.3.8.2	TABLE: Mechanical shock					P
Sample No.	OCV before test (Vdc)	OCV after test (Vdc)	Mass before test (g)	Mass after test (g)	Results	
KTR-2023-00071-B020	4.428	4.427	9.459	9.458	A, B, C, D	
KTR-2023-00071-B021	4.426	4.426	9.552	9.552	A, B, C, D	
KTR-2023-00071-B022	4.427	4.426	9.604	9.604	A, B, C, D	
Supplementary information: A - No fire or explosion B - No rupture C - No leakage D - No venting E - Others (please explain)						

IEC 62133-2			
Clause	Requirement + Test	Result - Remark	Verdict

7.3.9	TABLE: Forced internal short circuit (cells)					P
Sample No.	Chamber ambient T (°C)	OCV before test (Vdc)	Particle location ¹⁾	Maximum applied pressure (N)	Results	
Samples charged at charging temperature upper limit (45°C)						
KTR-2023-00071-C056	45.1	4.4	1	214.3	A	
KTR-2023-00071-C057	45.1	4.4	1	401.0	A	
KTR-2023-00071-C058	45.1	4.4	1	401.2	A	
KTR-2023-00071-C059	45.2	4.4	1	401.1	A	
KTR-2023-00071-C060	44.8	4.4	1	197.8	A	
Samples charged at charging temperature middle limit (20°C)						
KTR-2023-00071-C061	20.0	4.4	1	401.0	A	
KTR-2023-00071-C062	20.0	4.4	1	400.9	A	
KTR-2023-00071-C063	20.0	4.4	1	401.5	A	
KTR-2023-00071-C064	19.9	4.4	1	400.9	A	
KTR-2023-00071-C065	20.0	4.4	1	400.8	A	
Samples charged at charging temperature lower limit (0°C)						
KTR-2023-00071-C066	0.3	4.333	1	401.0	A	
KTR-2023-00071-C067	0.3	4.341	1	115.4	A	
KTR-2023-00071-C068	0.3	4.335	1	400.8	A	
KTR-2023-00071-C069	0.1	4.327	1	107.4	A	
KTR-2023-00071-C070	0.2	4.332	1	111.2	A	

IEC 62133-2			
Clause	Requirement + Test	Result - Remark	Verdict

Supplementary information:

¹⁾ Identify one of the following:

1: Nickel particle inserted between positive and negative (active material) coated area.

2: Nickel particle inserted between positive aluminium foil and negative active material coated area.

A - No fire

B - Others (please explain)

D.2	TABLE: Internal AC resistance for coin cells				N/A
Sample no.	Ambient T (°C)	Store time (h)	Resistance Rac (Ω)	Results ¹⁾	

Supplementary information:

¹⁾ Coin cells with an internal resistance less than or equal to 3 Ω, see test result on corresponding tables according to Clause 6 and Table 1.

IEC 62133-2			
Clause	Requirement + Test	Result - Remark	Verdict

TABLE: Critical components information						P
Object / part No.	Manufacturer/ trademark	Type / model	Technical data	Standard	Mark(s) of conformity ¹⁾	
Cell	ZHONGSHAN ZHONGWANGD E NEW ENERGY TECHNOLOGY CO., LTD	ZWD603026 S	3.87Vd.c., 650mAh	IEC 62133-2:2017, IEC 62133-2:2017/AM D1:2021	Tested with appliance	
-Positive electrode	Tianjin B&M Science and Technology Co.,Ltd	HVC-17B	LiCoO ₂ , Particle size D50: 17.5±2µm	--	--	
-Negative electrode	Jiangxi Zichen Technology Co., Ltd	Y515	C, content: 99.9% Particle size D50: 14µm	--	--	
-Separator	Shenzhen XuRan Electronics Co., LTD.	7+6	PE, Shutdown Temperature: 135-140℃	--	--	
-Electrolyte	Shenzhen Capchem Technology Co., Ltd	LBC445D58	LIPF6, EC, PC,DMC,DEC,EMC, EP, PP.1.3-PS	--	--	
-Aluminum plastic film	SHENZHEN YUNENG TECHNOLOGY CO.,LTD .	118	Al+Nylon+PP, Thickness: 0.118mm	--	--	
IC (U1)	RICOH ELEC TRONIC DEVICES CO., LTD.	R5492N350K L	Overcharge detection Voltage: 4.475V±0.02V, Overdischarge detection Voltage: 2.5V±0.062V, T _a : -40℃~+85℃	IEC 62133-2:2017, IEC 62133-2:2017/AM D1:2021	Tested with appliance	
MOSFET (U2)	Solo Semiconductor technology Co., Ltd.	SL0203PP	V _{DS} : 20V, V _{GS} : ±12V, I _D : 6A, T _J : -55℃~+150℃	IEC 62133-2:2017, IEC 62133-2:2017/AM D1:2021	Tested with appliance	
NTC (R3)	Murata MFG Co., Ltd	NCP15XH10 3F03RC	R ₂₅ =10kΩ±1%, B _{25/50} =3080k ±1% T _{opr} : -40℃~+125℃	UL1413	UL E137188	
PCB	SHENZHEN LUTONGDA TECHNOLOGY CO LTD	LTD-D	V-0, 130℃	UL94 UL796	UL E486889	

IEC 62133-2					
Clause	Requirement + Test			Result - Remark	Verdict
Wire	DONGGUAN MINGXIU ELECTRONICS TECHNOLOGY CO., LTD	3767	30V, 105°C, 28AWG	UL758	UL E492150

-- End of Report --

ATTACHMENT to IEC62133_2C			
Clause	Requirement + Test	Result - Remark	Verdict
ATTACHMENT TO TEST REPORT IEC 62133-2 (Republic of Korea) NATIONAL DIFFERENCES (Secondary cells and batteries containing alkaline or other non-acid electrolytes - Safety requirements for portable sealed secondary lithium cells, and for batteries made from them, for use in portable applications - Part 2: Lithium systems)			
Differences according to.....: National standard KC62133-2(2020-07)			
TRF template used:: IECEE OD-2020-F3:2022, Ed. 1.2			
Attachment Form No.....: KR_ND_IEC62133_2C			
Attachment Originator: KTR			
Master Attachment.....: 2023-08-02			
Copyright © 2022 IEC System for Conformity Testing and Certification of Electrical Equipment (IECEE), Geneva, Switzerland. All rights reserved.			
	National Differences		P
7.3.6	Over-charging of battery		P
(Revision)	[Add the bolded text] b) Test The test shall be carried out in an ambient temperature of 20 °C ± 5 °C. Each test battery shall be discharged at a constant current of 0,2 I _A , to a final discharge voltage specified by the manufacturer. Sample batteries shall then be charged at a constant current of 2,0 I _A , using a supply voltage which is: <ul style="list-style-type: none"> • 1,4 times the upper limit charging voltage presented in Table A.1 (but not to exceed 6,0 V) for single cell/cell block batteries or • 1,2 times the upper limit charging voltage presented in Table A.1 per cell for series connected multi-cell batteries, and • sufficient to maintain a current of 2,0 I_A throughout the duration of the test or until the supply voltage is reached. <u>• In case the charging voltage specified by the manufacturer is higher than the overcharge test voltage, the maximum charging voltage specified by manufacturer should be applied with 2,0 I_A, (e.g., quick charging power bank, etc.)</u>	6.0V applied (See appended table 7.3.6)	P

ATTACHMENT to IEC62133_2C			
Clause	Requirement + Test	Result - Remark	Verdict
	<p>[Replace to the following statement]</p> <p>c) Acceptance criteria</p> <p>Filling beyond the manufacturer's specified limits should not result in ignition or explosion</p>		P
Annex G	Definition for shape and materials of outer case for cell		—
(Addition)	<p>G.1 General</p> <p>Annex G provides definitions for shape and materials of outer case for cell</p> <p>G.2 Shape of outer case for cell</p> <p>G 2.1 Cylindrical cell</p> <p>Cell with a cylindrical shape in which the overall height is equal to or greater than diameter.</p> <p>G 2.2 Prismatic cell</p> <p>Cell having the shape of a parallelepiped whose faces are rectangular</p> <p>G.3 Materials of outer case for cell</p> <p>G.3.1 Soft case</p> <p>Non-metallic outer case or container for cell</p> <p>G.3.2 Hard case</p> <p>Metallic outer case or container for cell.</p>	<p>(Shape of outer cases)</p> <p><input type="checkbox"/> Cylindrical</p> <p><input checked="" type="checkbox"/> Prismatic</p> <p>(Materials of outer cases)</p> <p><input type="checkbox"/> Hard</p> <p><input checked="" type="checkbox"/> Soft</p>	—
Annex H	Calculation method of the volumetric energy density for cell		—
(Addition)	<p>Annex H provide a calculation method of the volumetric energy density for cell in use of smart phone, tablet, notebook.</p> <p>H.1 General</p> <p>Unless otherwise stated in the Annex E, the dimensions for calculation are based on these for cell before shipment and the volumetric energy density shall be calculated with a maximum values specified by manufacturer. If the specification for cell can't be provided a dimension for calculation, the manufacturer's other documentation shall be provided to demonstrate compliance for its calculation.</p>	537.5 Wh / L	—

ATTACHMENT to IEC62133_2C			
Clause	Requirement + Test	Result - Remark	Verdict
	<p>H.2 Calculation Method</p> <p>L : Length (max.) of cell (including terrace) W : Width (max.) of cell T : Thickness (max.) when shipping charge (For reference, Please Exclude the dimension of any tape that is attached to cell)</p> $\text{Volumetric energy density (Wh/L)} = \frac{\text{Nominal voltage (V)} \times \text{Rated capacity (Ah)}}{\text{Length (L)} \times \text{Width (W)} \times \text{Thickness (T)}}$ <p>[H.1 – Prismatic cell using soft case]</p> <p>L : Length (max.) of cell W : Width (max.) of cell T : Thickness when shipping charge (For reference, Please Exclude the dimension of any tape that is attached to cell)</p> $\text{Volumetric energy density (Wh/L)} = \frac{\text{Nominal voltage (V)} \times \text{Rated capacity (Ah)}}{\text{Length (L)} \times \text{Width (W)} \times \text{Thickness (T)}}$ <p>[H.2 – Prismatic cell using hard case]</p> <p>D : Diameter (max.) of cell L : Length (max.) of cell (According to shape of cell at shipping, The dimension of tube for cell may be included in overall dimension of cell)</p> $\text{Volumetric energy density (Wh/L)} = \frac{\text{Nominal voltage (V)} \times \text{Rated capacity (Ah)}}{3.14159 \times \frac{\text{Diameter (D)}^2}{4} \times \text{Length (L)}}$ <p>[H.3 – Cylindrical cell using hard case]</p>		

Product: Rechargeable Li-ion Battery

Type Designation: ZWD603026S

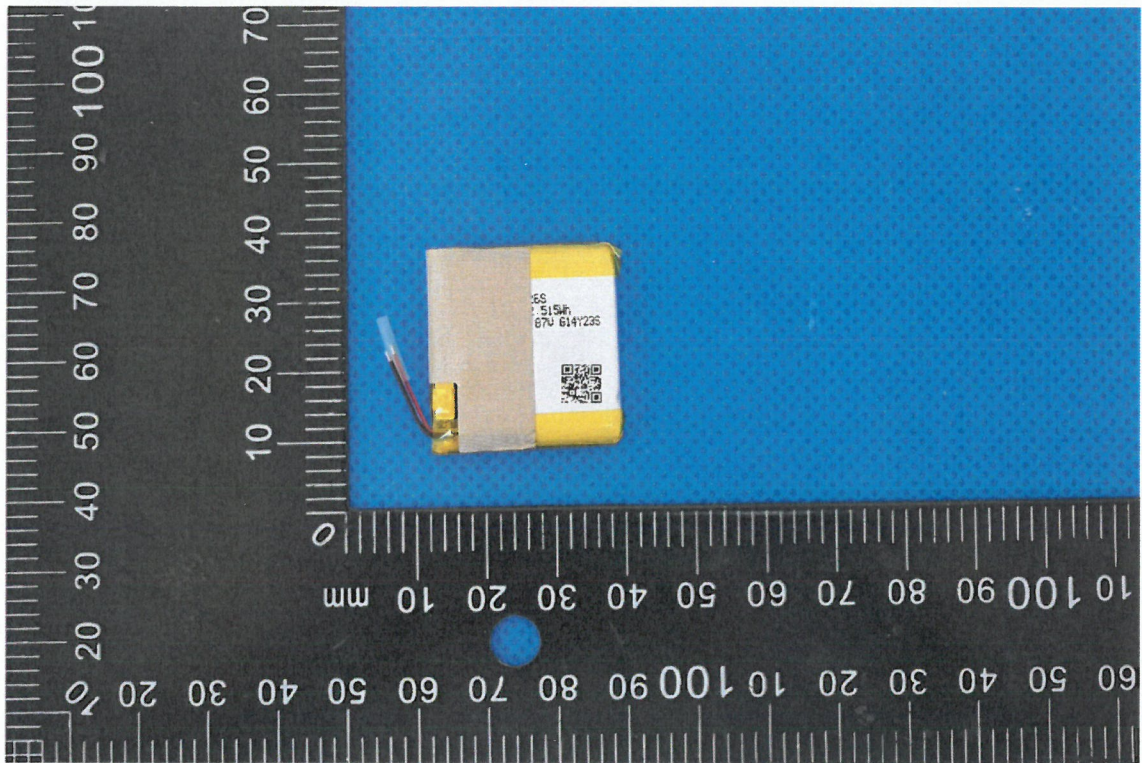


Figure 1 Front view of battery

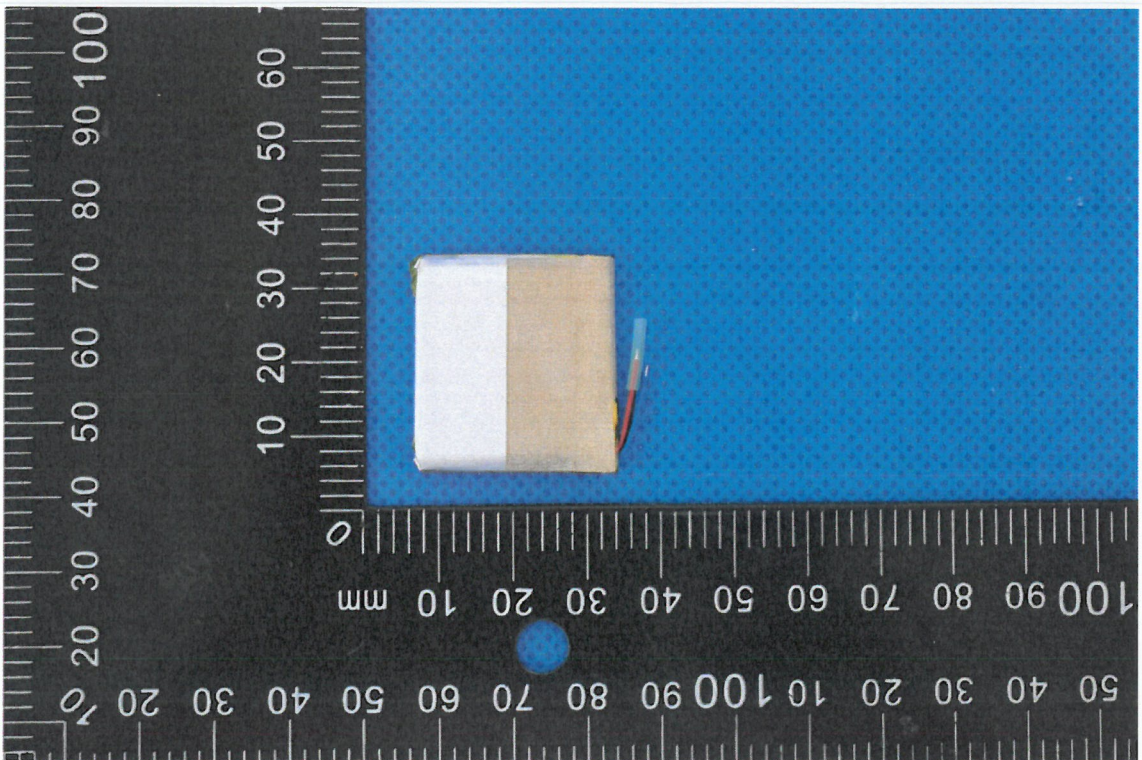


Figure 2 Back view of battery

Product: Rechargeable Li-ion Battery
Type Designation: ZWD603026S

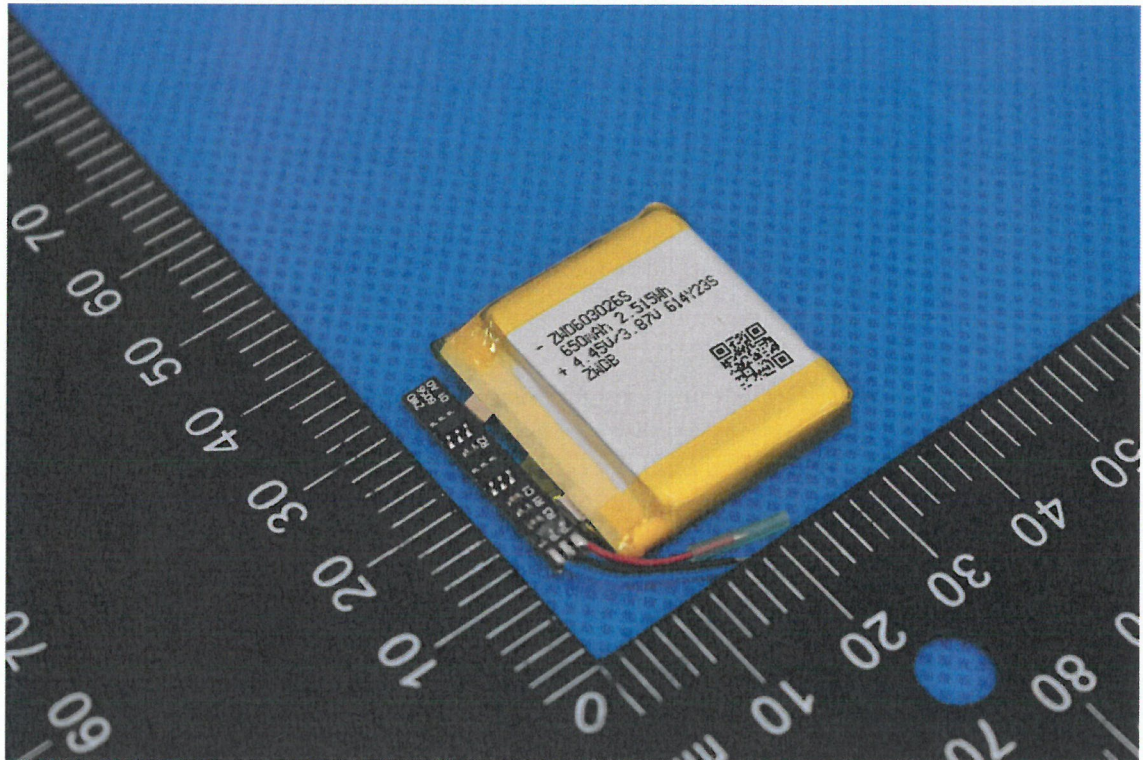


Figure 3 Inside view of battery

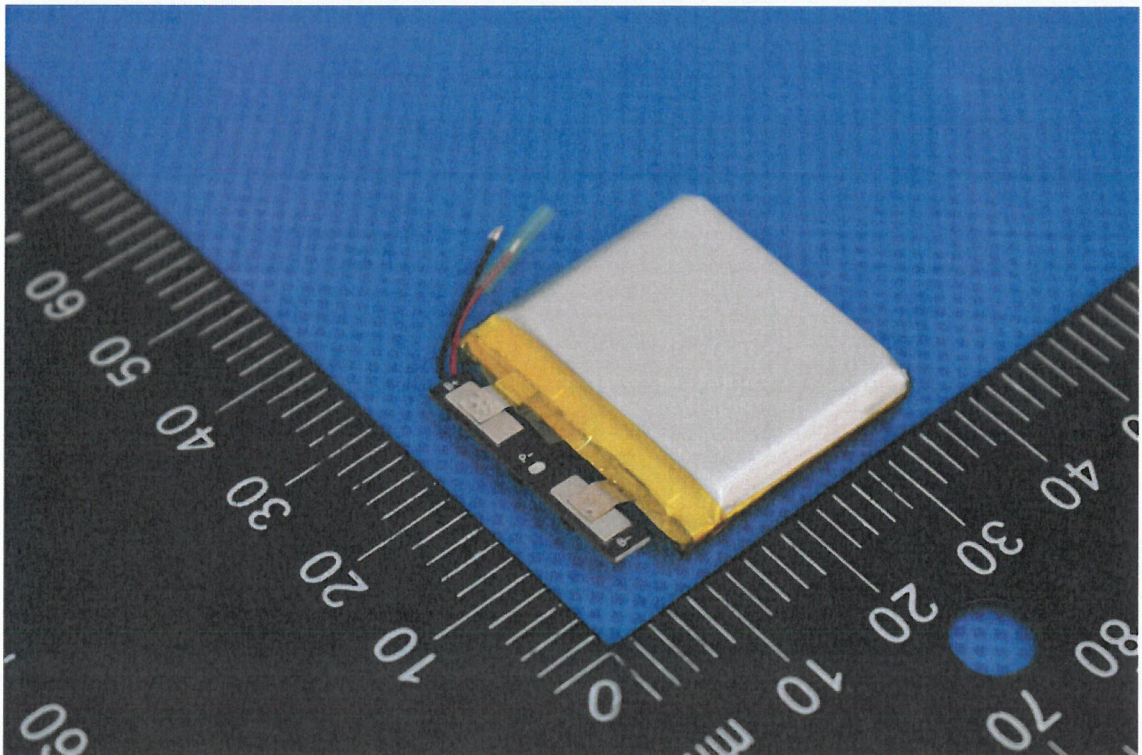


Figure 4 Inside view of battery

Product: Rechargeable Li-ion Battery

Type Designation: ZWD603026S

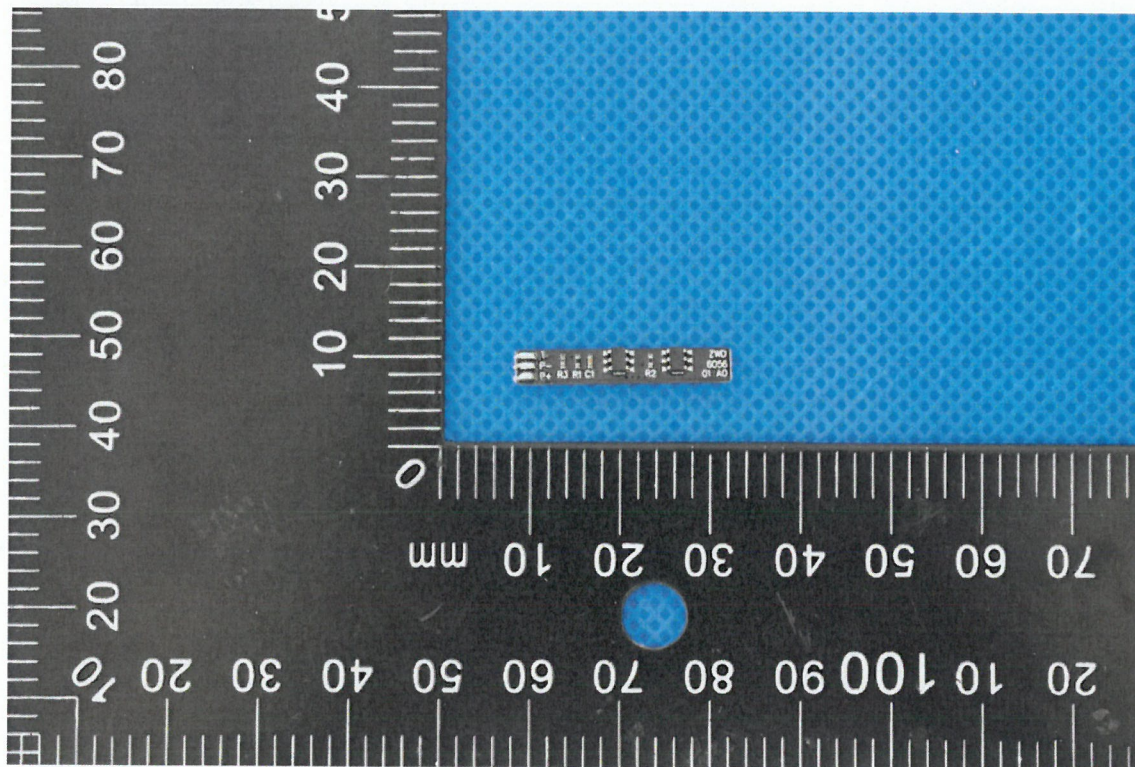


Figure 5 Front view of PCB

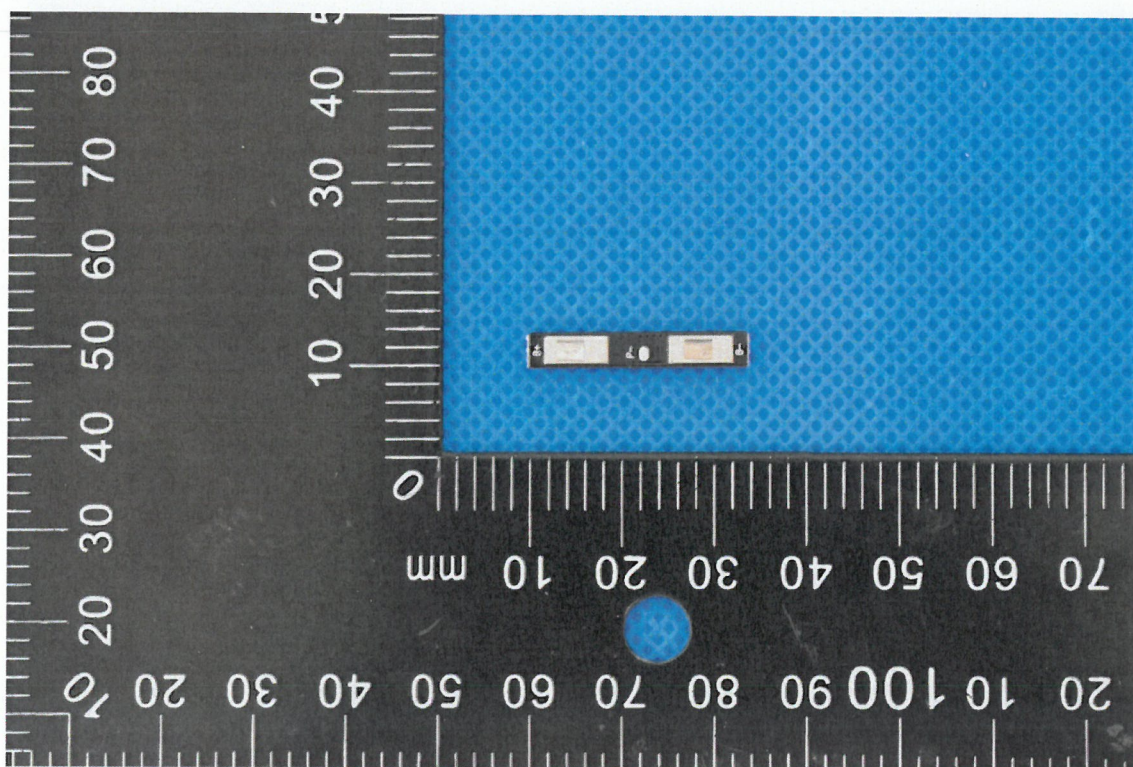


Figure 6 Back view of PCB

Product: Rechargeable Li-ion Battery

Type Designation: ZWD603026S

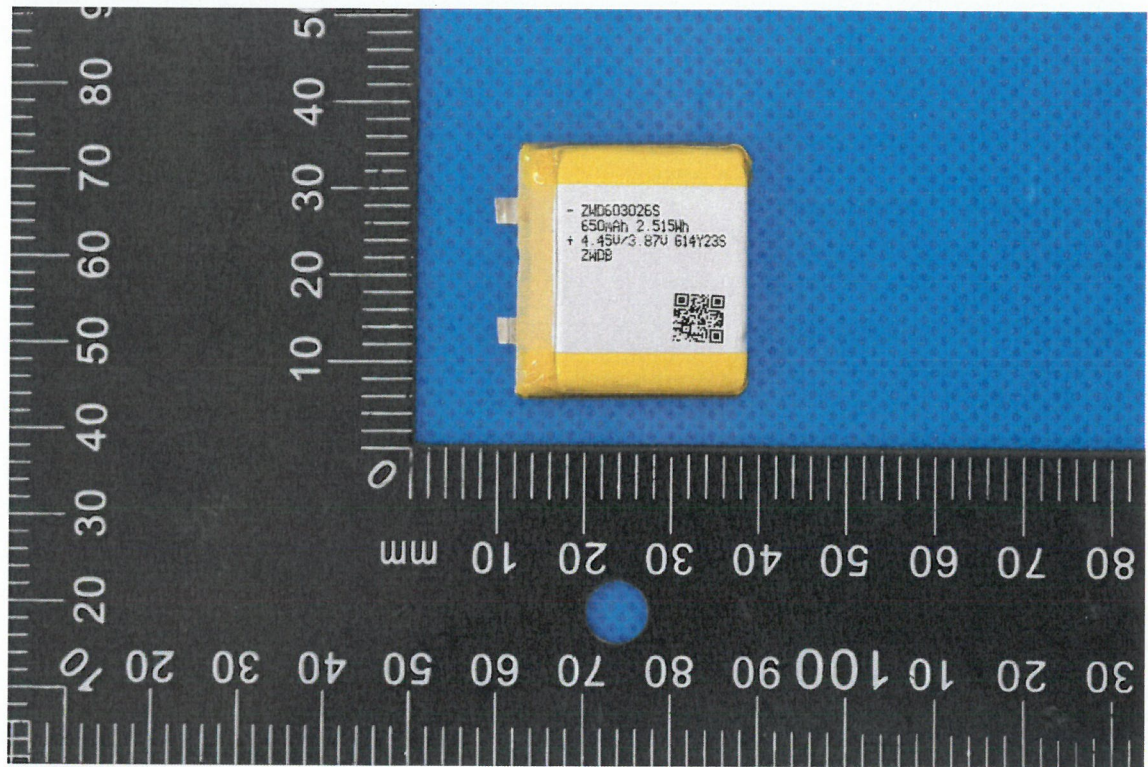


Figure 7 Front view of cell

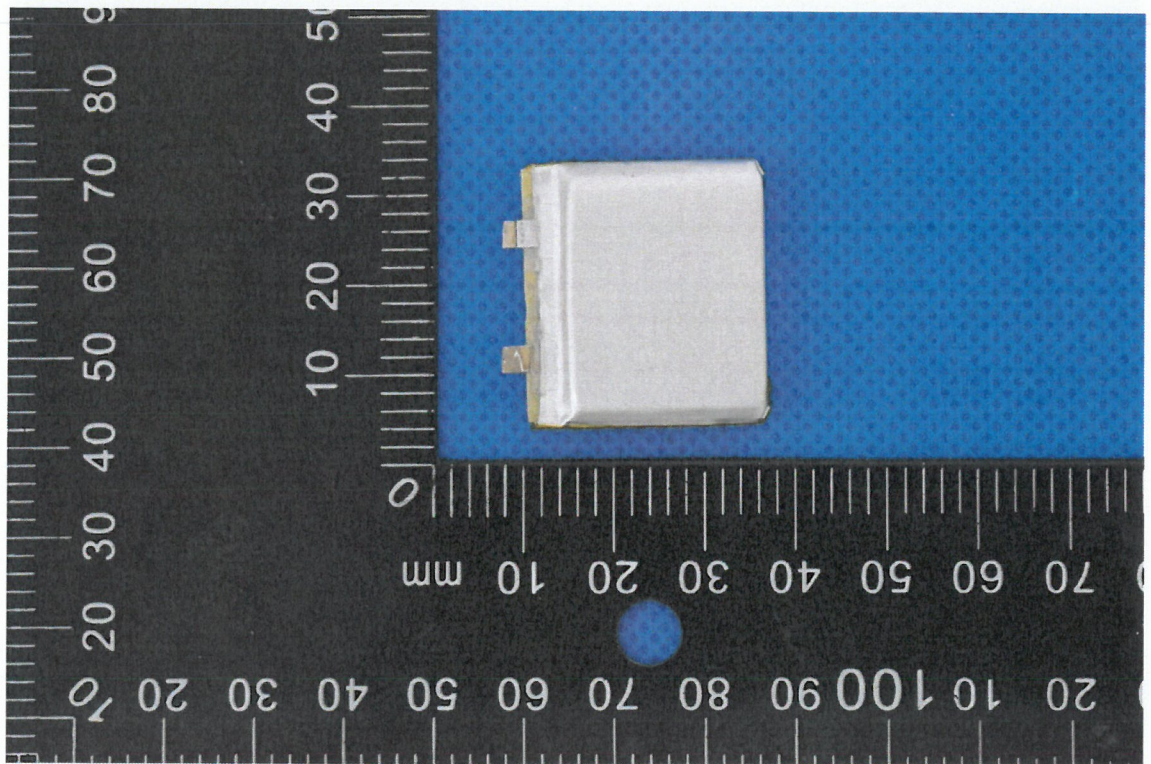


Figure 8 Back view of cell